



For Your Business

NEW JERSEY NATURAL GAS ADVANTAGE

RELIABILITY

TRUST

SINCE 1952

VALUE

NEW JERSEY'S CLEAN ENERGY PROGRAM HELPS THINGS WORK FOR YOU

Sometimes, the biggest challenge to making energy-efficiency improvements is knowing where to start. New Jersey's Clean Energy Program (NJCEP) is a statewide program that provides a variety of economic benefits for commercial and industrial entities, businesses and local governments by offering financial incentives as well as programs and services to help offset the costs of energy-efficiency upgrades. Following is a snapshot of some of the programs available from NJCEP to help you on your way to energy-efficiency enhancements.

Waste Heat ... Why Not Cogeneration?

The concept of cogeneration, or combined heat and power (CHP), dates back to the 1880s when reciprocating steam engines powered the first electric generators. Today, CHP greatly increases a commercial or industrial facility's operational efficiency - while decreasing energy costs by meeting part or all of a facility's electrical and/or mechanical power as well as heat recovery for heating, cooling and process applications. In addition, the end user can hedge against volatile energy prices and protect revenue streams, while reducing greenhouse gas emissions typically associated with electricity production.

To help qualified commercial and industrial facilities offset the costs of adopting CHP systems, NJCEP offers a generous financial incentive up to \$1 million for any size system - limited to the first megawatt (MW) of capacity - with on-site recovery and productive use of waste heat. However, the BPU is currently working to develop a solicitation to incentivize larger-scale CHP projects over 1 MW of capacity and anticipates word in mid-2012. Further updates will be posted to the NJCEP Web site.

Pay Only a Fraction of Energy-Efficiency Costs!

With Direct Install, the costs of energy-efficiency upgrades just got more affordable. This turnkey solution makes it easier for small- to mid-size commercial entities, businesses, schools and local governments to reduce their facilities' energy costs by providing a convenient, single-contractor approach to energy efficiency. The program offers a FREE detailed assessment to identify cost-effective and energy-efficiency improvements, including lighting and equipment replacements with energy-efficiency alternatives. Direct Install pays up to 70 percent of eligible total project costs, with a \$75,000 per building cap. You pay only 30 percent out of pocket, but get 100 percent of the benefits. Your new energy-efficient operation will see reduced energy costs for years to come. Now that's smart business!

NJ SmartStart Buildings Incentives

Whether starting a commercial or industrial project from the ground up, renovating existing space or upgrading equipment, commercial and local government facilities have unique opportunities to affordably improve the energy efficiency of a project with NJ SmartStart Buildings. The program provides significant financial incentives to help offset the incremental costs of installing energy-efficient equipment, providing long-term energy and dollar savings. Incentives are calculated based on type, efficiency, size and application of eligible equipment. Call 866-NJSMART to reach a program representative.

For more information on these and other NJCEP programs, visit www.njcleanenergy.com and click on the Commercial, Industrial and Local Government tab.



Thank You for Supporting the Gift of Warmth

Over the years, thanks to the generosity of our customers, shareowners and employees, we have helped more than 20,000 families in our community stay warm during the winter months through the NJNG Gift of Warmth fund. The fund assists with heating costs for those facing financial hardship, sometimes the result of illness or unemployment.

Every dollar donated goes directly to those families in need, and NJNG matches your donation dollar-for-dollar, up to a total of \$80,000. To donate, simply indicate on the form below which option you prefer – a one-time donation or a recurring monthly contribution right on your NJNG bill. If you choose to make a one-time donation, we kindly ask that you write out a separate check to the Gift of Warmth. We appreciate your generosity.

Please accept my Gift of Warmth donation.

Add this amount each month to my NJNG bill*

\$1 \$5 \$10 \$20 Other \$ _____

-or-

Accept my one-time donation of

\$20 \$30 \$40 \$50 Other \$ _____

Check one of the boxes below:

I have enclosed a check.

Please add the amount to my NJNG bill.

Account Number:

□□-□□□□-□□□□-□□

Signature: _____

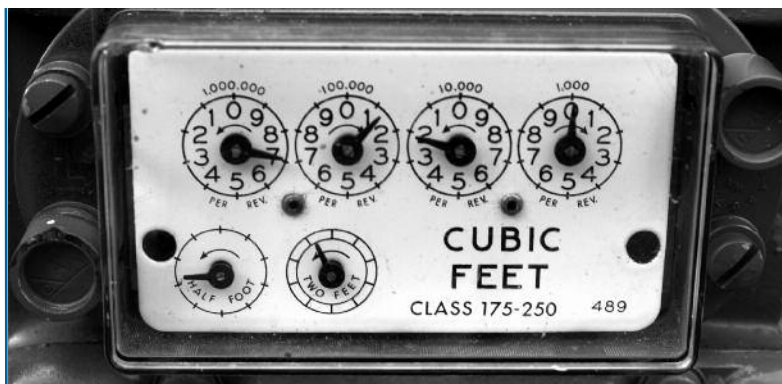
Name: _____

Address: _____

Make your check payable to "Gift of Warmth Fund," and **return in a separate envelope** with your completed donation form to:
Gift of Warmth fund, P.O. Box 1463,
Wall, NJ 07719

Please do not use your payment envelope for your contribution.

*Choosing this option will add the specified dollar amount to your NJNG bill each month. To cancel your monthly contribution, simply call 800-221-0051. All contributions are tax-deductible.



Meter Safety Alert

At NJNG, we are scheduled to read natural gas meters on a monthly basis. For meter reading and other safety purposes, we are required to have unhindered access to the meter at all times. As spring brings new growth and plantings, be sure to keep the area surrounding your meter free of overgrown plants and other obstructions. Be cautious when mowing your lawn or operating other equipment around your meter. Do not lean ladders or metal objects against the meter. And never tie anything – including a dog leash, guy wire or ground wire – to a meter or its piping as this may cause a hazardous condition.

Help us prevent a potentially dangerous situation and notify us if you have a dog in your yard. For our employees' safety, call us so we can make a note on your account about any dogs on your property or if you have an invisible fence. This will alert our employees to take proper precaution when reading your meter. Following this advice will give our meter readers and other technicians easy access to your natural gas meter, especially in case of an emergency. If you feel your natural gas meter is in an unsafe location, such as too close to a driveway or under a deck, call us at 800-221-0051 for an assessment.

Plant a Tree:

Help Protect the Environment

Today, climate change is a major concern. The simple act of planting a tree will absorb just over one ton of carbon dioxide from the atmosphere, help fight global warming, improve the quality of our air and water, provide shelter for wildlife and enhance the quality of life for generations to come.

Help make a difference by participating in NJNG's Planting for Our Future program. For every \$5 donation received, one tree is planted. And NJNG will match all customer donations dollar-for-dollar, with 100 percent of donations allocated to planting trees in native forests across our country, including the Edwin B. Forsythe Wildlife Refuge in Ocean County. To date, together with our customers, we've planted over 37,500 trees and reduced carbon emissions by more than 50,000 tons!

Join our efforts to help protect the environment. Add your desired contribution to your NJNG bill or simply send a check in the enclosed donation envelope. Thank you for making a difference!

How To Reach Us

Call us:

Toll-free: 800-221-0051

People with hearing and speech impairments (TTY/TDD): 800-223-0024

Report a natural gas leak: 800-GAS-LEAK (800-427-5325)

Call before you dig: 811 or 800-272-1000

E-mail us: customerservice@njng.com

Visit our Web site: www.njng.com

Write to us: New Jersey Natural Gas, 1415 Wyckoff Road, P.O. Box 1464, Wall, NJ 07719

Visit our Facebook page

(www.Facebook.com/NewJerseyNaturalGas)
and learn how you can win an iPad®3.